

American Homestead, Revisited

Plan ID: D202

The Basics: 3291 Square feet | 4 Bedrooms
| 3 Bath | 0 Garage stalls | 2 Levels

Features:

- Folk Victorian farmhouse and sleek modern design juxtaposed and fused integrally, inside and out
- Windowed two-story “breezeway” is a contemporary bridge (and entry) between two “old” farmhouses
- A quantity of windows throughout, for light and airy openness in both the traditional and contemporary spaces
- Vaulted dining room opens to exterior on two sides; bifold door systems open up both walls
- Easy access to two attics (play space, storage, bonus room) from second floor hall
- Flexible, open layout within indoor/outdoor flow

Specs:

Total living area: 3291 sq ft.

First Floor: 1968 sq. ft.

Second Floor: 1323 sq. ft.

Unconditioned area:

Garage stalls: 0

Covered front porch: 71 sq. ft.

Covered back porch: 226 sq. ft.

Covered side porch: 29 sq. ft.

Attic (over 5' in height): 516 sq. ft.

Number of Rooms:

Bedrooms: 4

Full Baths: 3

Half Baths: 0

Number of Stories: 2



Dimensions:

Width: 67'-3"

Depth: 36'-10"

Height: 32'-8"

Ceiling heights: Various: 9' flat ceilings and vaulted w/ exposed rafters

Roof:

Pitch (main): 12:12 & 4:12

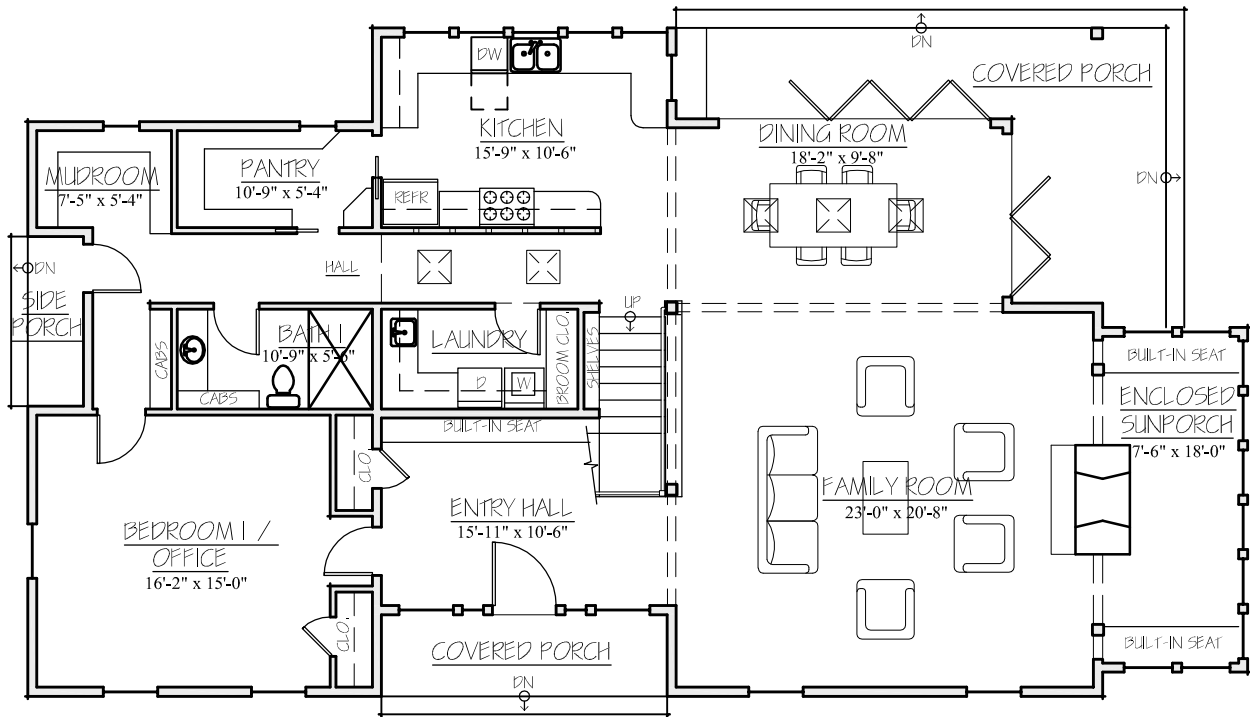
Framing: Stick

Type: Standing seam metal

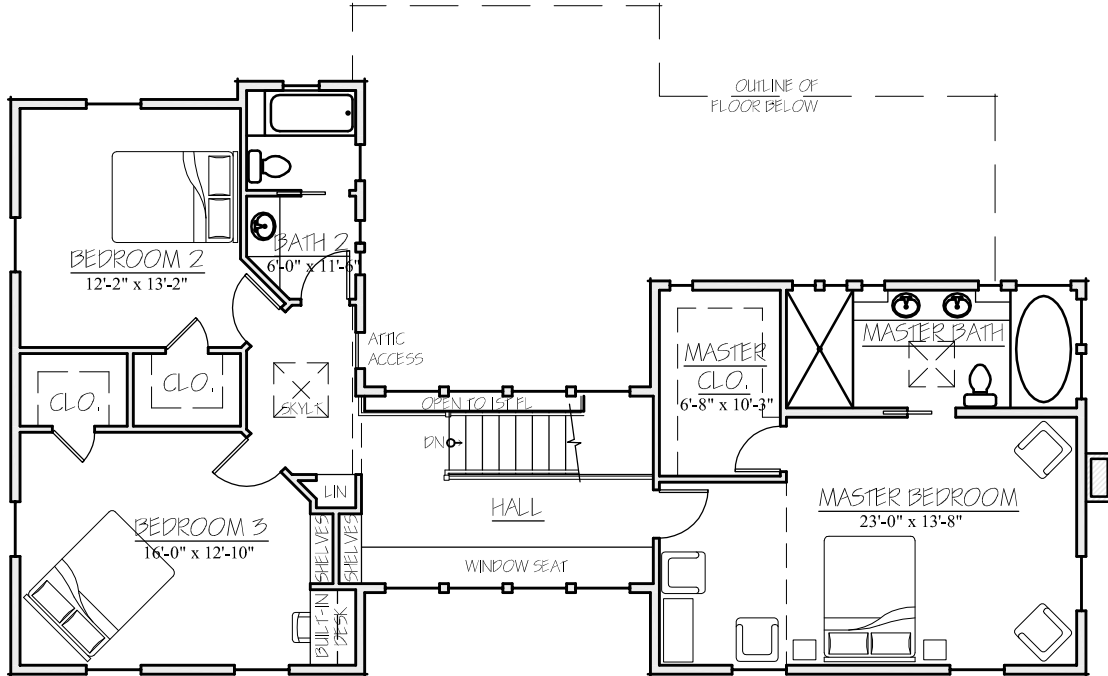
Exterior Wall Construction: 2x6

Exterior Materials:

- Dutch lap siding, white
- Board & batten siding
- Standing seam metal roof

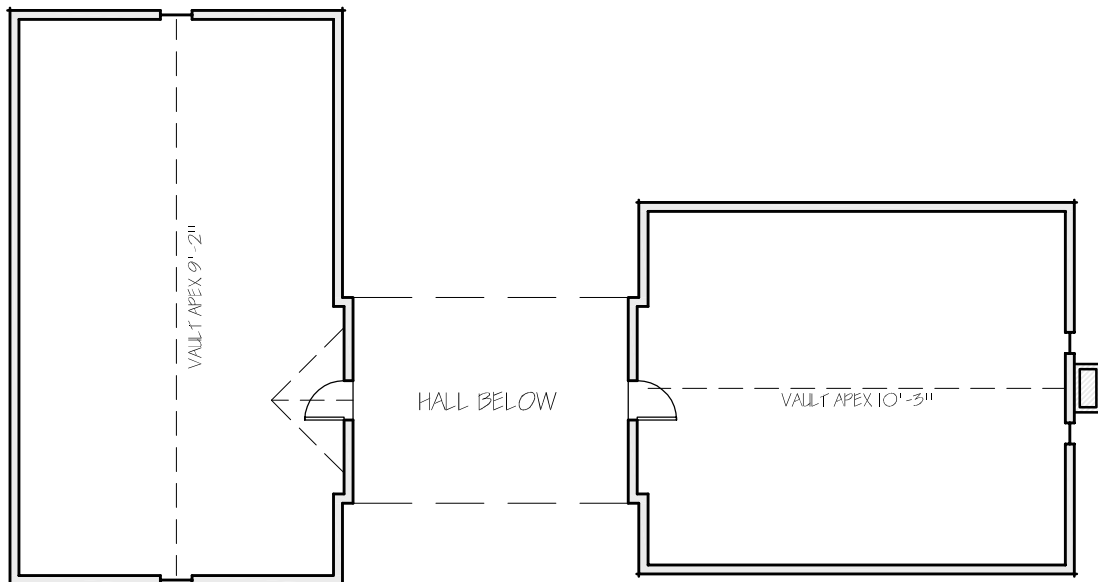


D202: First level Floorplan



D202: Second level Floorplan

© Madson Design



D202: Attic level Floorplan

© Madson Design